

Installation instructions Jaguar 2.0 D 130hp / 2.2 D 155hp

▶ 1. Preparations

Switch the ignition off.
Wait, until all electric power consumers are switched off.
Remove the engine cover (see ill.1).

▶ 2. Cable harness installation

Localize the diesel pressure sensor/pressure transducer sensor (see ill.2/3).
The diesel pressure sensor is a 3-pole contact plug and is on the left side at the common rail. Disconnect the plug.

Connect the cable of the CRD System with the original plug of the common rail.
Connect the 12 V cable with the +Pole of the vehicle battery.

Move the cable if possibly splash water protected and avoid attaching in hot engine parts.

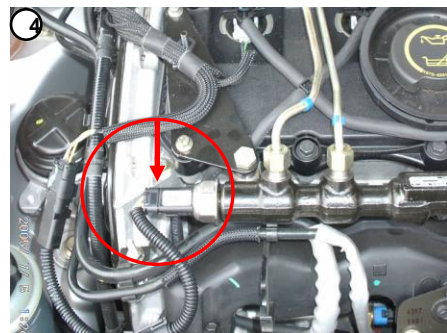
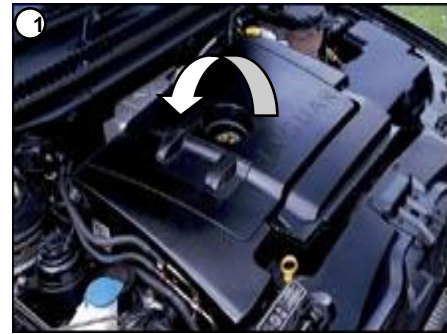
Put now the module on the Sub-D connection (see ill.5)

▶ 3. Settings - fine adjustment

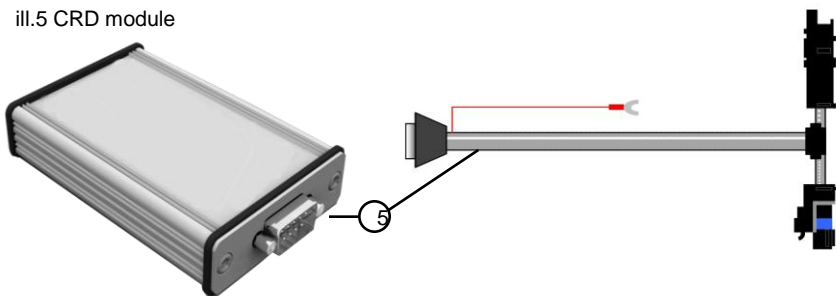
The system is preset. Normally you will not need to adjust the module.
If you want to increase or reduce the power performance, you will only need to place the jumper to the left (increased efficiency) or to the right (reduced power performance). Please contact the manufacturer, before changing the jumper settings.

Now fit the engine cover back on. The vehicle is ready for a test drive.
If you remove the module, you have to plug the null-contact onto the cable harness or remove the whole tuning system and restore the original settings, otherwise the vehicle will not function properly.

You still have questions or you are not quite sure?
Contact us, a technician will gladly help you!



ill.5 CRD module



ill.6 installation principle

